



Marie Skłodowska- Curie Actions

under Horizon Europe

Cross-action novelties

Boryana Yotova

European Commission

Directorate-General for Education, Youth,
Sport and Culture

Unit C2. Marie Skłodowska-Curie Actions

Family allowance

Mobility-related costs of researchers with **family obligations**



(i) marriage

(ii) relationship with equivalent status to marriage (under the law of the country or region in which this relationship was formalised)

(iii) dependent children who are actually being maintained by the researcher

EUR
500

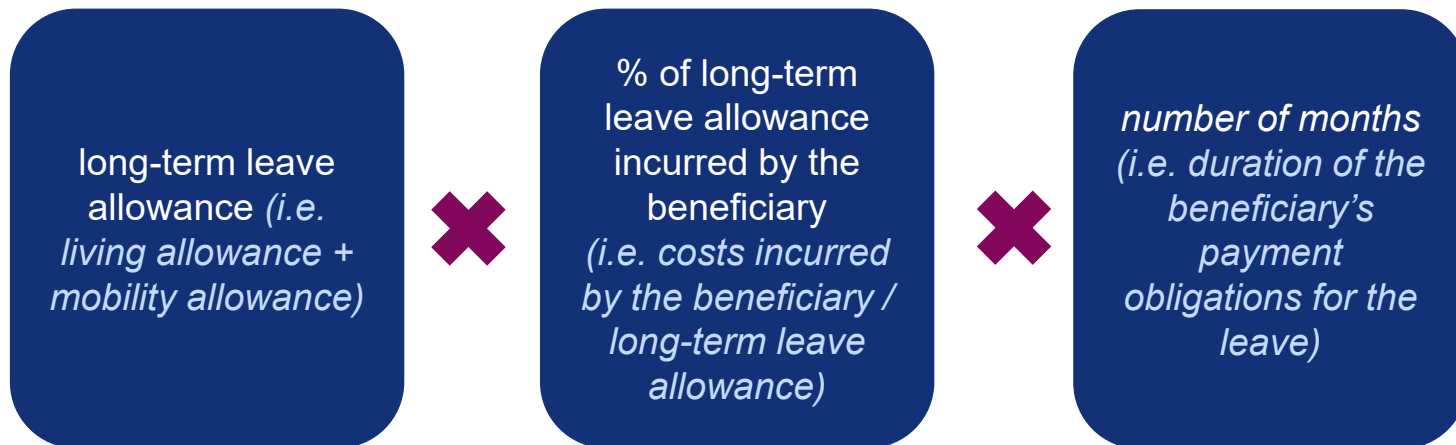
EUR
660

Due if the researcher has or acquires family obligations during the action

Long-term leave allowance

What does it cover?

- personnel costs incurred by the beneficiaries in case of researchers' leave, including maternity, paternity, parental, sick or special leave.




 For absences longer than 30 consecutive days.

Special needs allowance

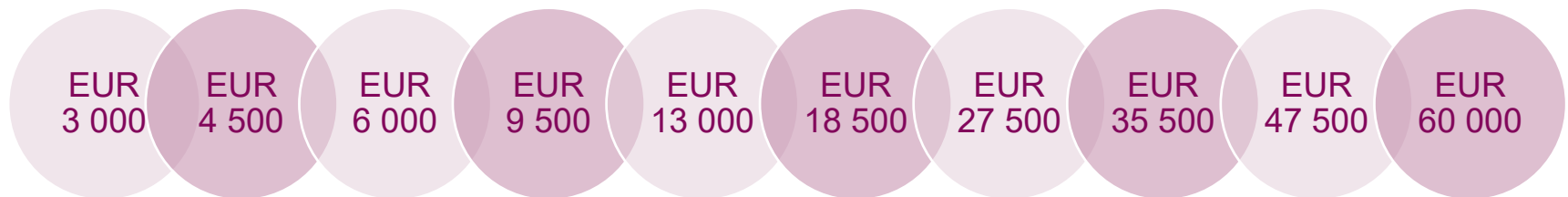
What does it cover?

- Additional costs for the acquisition of **special needs items and services** for fellows with disabilities, e.g. assistance by third persons, adaptation of work environment, additional travel or transportation costs.

 The items or services must not have been covered from another source (e.g. social security or health insurance)

For whom?

- MSCA fellows with disabilities, whose **long-term** physical, mental, intellectual or sensory impairments are **certified by a competent national authority** and of such nature that their participation in the action **would not be possible** without the special needs items or services.

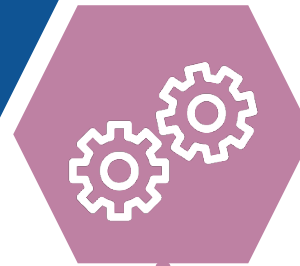


 Beneficiaries shall claim the **closest lower rate** per researcher/staff member compared to the estimated actual costs of his/her special needs.

Academic and non-academic sectors

Academic sector

- ✓ public or private higher education establishments
- ✓ public or private non-profit research organisations
- ✓ International European Research Organisations



Non-academic sector

- ✓ any socio-economic actor not included in the academic sector

Gender Equality Plans

Corporate eligibility criterion in Horizon Europe (not specific to MSCA)

Applicable to public bodies, research organisations and higher education establishments from EU Member States and Horizon Europe Associated Countries

Minimum process-related requirements for publication, dedicated resources, data collection & monitoring, and training

Transition/grace period before full enforcement for calls with deadlines in 2022

Questions?

Ask your questions on Slido

www.sli.do

Use event code **#3028**